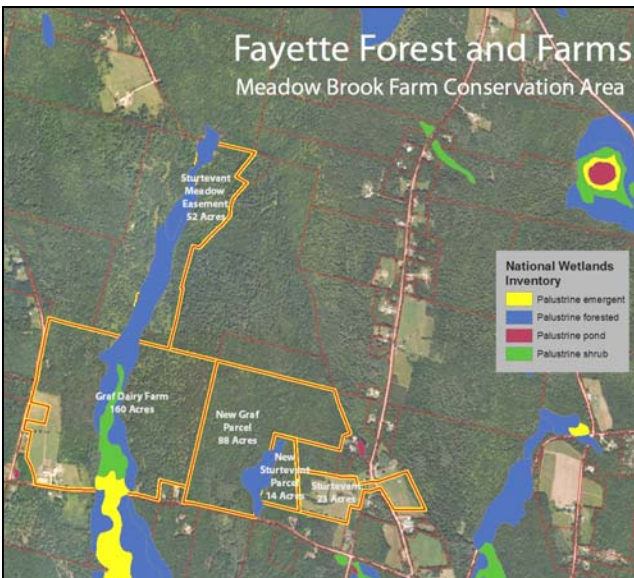


**MEADOW BROOK FARM AND
STURTEVANT FARM
FAYETTE, MAINE**

Meadow Brook Farm is a 240-acre dairy farm which has been owned and operated by Berndt and Elaine Graf since 1983. The Graf's farm is the last remaining dairy in Fayette. Berndt and Elaine are determined to ensure that agriculture remains in Fayette. Working with Kennebec Land Trust (KLT) and the Maine Department of Agriculture, Food and Rural Resources, they have agreed to a permanent conservation easement for their farm. The Graf's are selling this conservation easement (and the development rights for their land) at far less than the fair market price. KLT will purchase the easement with funding from the Land for Maine's Future Program.

The protection of this property will allow the Graf's to realize their goals of increased farm sustainability as they have recently acquired a contiguous 90-acre parcel of land, of which they intend to convert
Continued on inside...



**About the
Kennebec Land Trust...**

The Kennebec Land Trust (KLT) works cooperatively with landowners and communities to conserve the forests, shorelands, fields, and wildlife that define central Maine.

KLT protects land permanently, offers opportunities for people to learn about and enjoy the natural world, and works with partners to support sustainable forestry and farming.

KLT properties include Vaughan Woods in Hallowell, Curtis Homestead in Leeds, Mount Pisgah in Winthrop, Parker Pond Headland in Fayette, Davidson Nature Preserve in Vassalboro, Vassalboro Wildlife Habitat in Vassalboro, Gott Pasture Preserve in Wayne, and Webber-Rogers Farmstead in Litchfield.

Come explore these local treasures! Most of our conservation lands offer public access for hiking, paddling, bird watching, skiing, and enjoying nature in all seasons. Please visit www.tkl.org for more information.

Join us!



John Burnes



MEADOW BROOK FARM

AND

STURTEVANT FARM



FAYETTE, MAINE



**Kennebec
Land Trust**

134 Main Street, Rm. 2B ~ PO Box 261
Winthrop, ME 04284
(207) 377-2848 ~ www.tkl.org

Photographs, clockwise from upper left: Jerry Bley, Arn Sturtevant, © Jym St. Pierre, © Jym St. Pierre

MEADOW BROOK FARM AND STURTEVANT FARM, FAYETTE MAINE

...Continued from front. 65 acres to hay land and pastureland. This will allow them to fulfill their desire to own, rather than lease, the lands that will support their dairy herd.

KLT's Meadow Brook Farm conservation easement will include **ecological protection areas** along the two streams that cross the property where the primary management will be the protection of wildlife habitat and water quality. The Grafts have also agreed to include **public recreational access** into the proposed conservation easement on their property. KLT intends to develop a non-motorized trail network through a forested portion of the property and the Grafts have agreed to continue an existing snowmobile trail which is managed by the Rainbow Riders, the local snowmobile club.

The proposed protection of Meadow Brook Farm has been met with strong community support. Arnold and Leda Sturtevant own an eighth-generation farm adjacent to the Meadow Brook Farm property and operate **Home-Nest Bed & Breakfast**, a farm-based tourism business. They previously had donated a conservation easement to KLT over 26.4 acres preserving open fields and the scenic view of Maine's western mountains that can be enjoyed by the public from a road-side viewing area. Upon learning of the Graf's plan to place an easement on their lands, the **Sturtevants offered to donate a conservation easement** on two additional parcels that abut the Graf's property **totaling 64.2 acres**. The Sturtevant parcels includes field, forest, and wetland as well as three-quarters of a mile of Meadow Brook frontage. The Sturtevants have agreed to **public recreational access** which will provide for a trail linkage through Meadow Brook Farm.



© Jym St. Pierre

KLT will be responsible for monitoring the Meadow Brook and Sturtevant Farm easements and providing exceptional public recreational opportunities across these lands. We need your help to ensure that these lands are protected forever and available for the public to enjoy. **The Trust needs to raise \$10,000.00 in stewardship funds to meet this responsibility in perpetuity.**



Meadow Brook, bordering 55 acre Sturtevant Meadow Brook Forest Conservation Easement
Photograph: Jerry Bley

We hope you can support this important conservation project. Thank you Elaine and Berndt and Arn and Leda for your generosity and community conservation vision.

To make a tax-deductible donation, please fill out the attached form and return to:

**Kennebec Land Trust
PO Box 261
Winthrop, ME 04364
or donate at www.tkl.org**



**Kennebec Land Trust
Meadow Brook and Sturtevant
Fund Donation and Pledge Form**

Name(s): _____

Address: _____

City: _____

State: _____ Zip: _____

Phone: _____

Email: _____

If donating as a business, name of the business:

I/we enclose a donation of ___\$2500___\$1000
___\$500___\$250___\$100 or \$_____

or

I/we pledge a total of \$_____ to KLT's Meadow Brook and Sturtevant Fund.

The payment of the pledge is to be fulfilled as follows:

\$ _____ in 2011; \$ _____ in 2012; \$ _____ in 2013

Amount Enclosed: \$ _____.

Signature: _____

Date: _____

Please make checks payable to
Kennebec Land Trust

Credit Card: Visa or Mastercard:

_____ - _____ - _____ - _____

Exp Date: ____/____

Signature: _____

Date: _____

*You may also donate by credit card at
www.tkl.org*

Donations are deductible to the extent provided by law. A letter of acknowledgement will be provided. KLT reserves the right for use of its name and logo.