

## Logging

The Tyler Conservation Area was heavily logged in the early 1990s. The logging had a lasting impact on the area because it allowed the invasive plant glossy buckthorn to flourish.



Ryan Fish

slash left from logging

Buckthorn is very difficult to successfully remove. It is a hardy bush with a sturdy root system.



**glossy buckthorn ( *Frangula alnus* )**

Photo credit: Gil Wojciech

Small buckthorn plants can be pulled out by hand. When trees are large and have deep root systems, manual buckthorn control is very difficult if not impossible.

Fire and herbicides have also been used to control this invasive species.

**burning bush ( *Euonymus alatus* )**

Logging has allowed other invasive plants like burning bush, autumn olive, and invasive honeysuckle to grow at the Tyler Conservation Area but none as aggressive as glossy buckthorn.



Ryan Fish

## Flora & Fauna



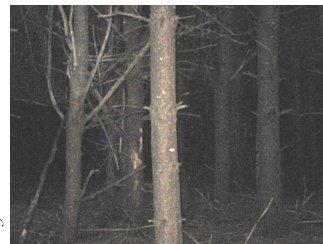
Ryan Fish

**hemlock ( *Tsuga canadensis* ) grove on the trails**



Ryan Fish

**Christmas fern ( *Polystichum acrostichoides* )**



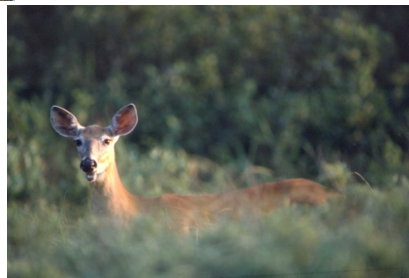
Ryan Fish

**white pine ( *Pinus strobus* ) grove**



RGS

**ruffed grouse ( *Bonasa umbellus* )**



Maine.gov

**white-tailed deer ( *Odocoileus virginianus* )**

## About Kennebec Land Trust

The Kennebec Land Trust (KLT) works cooperatively with landowners and communities to conserve the forests, lakes, streams, wetlands, fields, and wildlife that help define central Maine. KLT protects and stewards land permanently, offers access to conserved properties, provides opportunities for people to learn about and enjoy the natural world, and works with partners to support sustainable forestry and farming.

Protected properties include Vaughan Woods in Hallowell, Howard Hill in Augusta, Mount Pisgah in Winthrop, Parker Pond Headland in Fayette, Norris Island in Wayne, and Surry Hill in Fayette. Most KLT conservation lands offer public access for hiking, paddling, bird watching, skiing, and just enjoying nature, in all seasons.

A full listing of Kennebec Land Trust properties, and recreational uses and an interactive map with directions can be found at our website: [www.tklt.org](http://www.tklt.org)

**Please join us!**

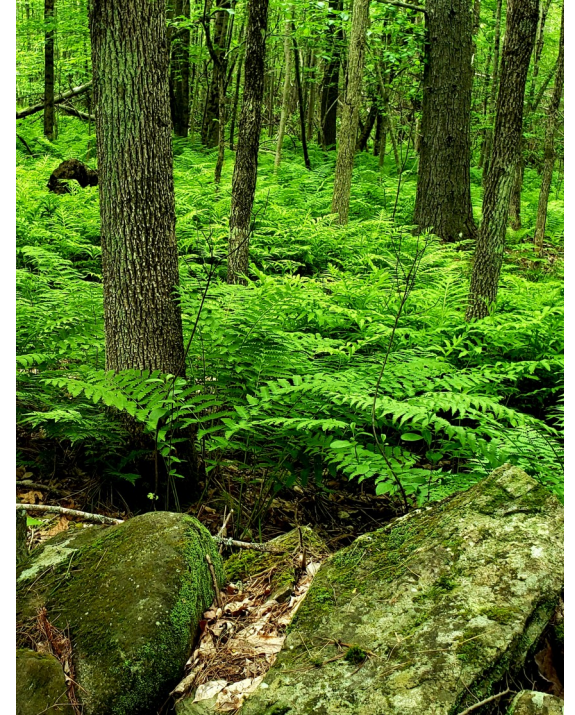


Ryan Fish

Thanks to those who contributed expertise, time, and other resources towards this brochure: John Tyler, Gary Fish, Peggy Barnes and Theresa Kerchner.



## Tyler Conservation Area Readfield



Jym St. Pierre

## Kennebec Land Trust

*Conservation Across Generations*



## Welcome to the Tyler Conservation Area.

This conservation land protects 53 acres of forest and wetlands in Kennebec County. The property features two hiking trails and a snowmobile trail.

**Land Use History:** In 1956, Mary and John Tyler, Sr., arrived in Readfield from Caribou, Maine, and purchased what is today the 53-acre Tyler Woods Conservation Area. They spent over a decade renovating their 1800's farmhouse, while the surrounding woodland and wetland provided a



Ryan Fish

**Granite marker on property border with unknown inscription "GB-201".**

place of exploration and adventure for young John and Henry Tyler. In the early 1990's, a logger removed more trees during a timber harvest than the Tylers anticipated, motivating the family to contact KLT about conserving the land they had grown to love over three generations. A conservation easement was developed and granted to KLT to protect the land in perpetuity and to share its beauty with the community.

**Conservation History:** This property has been protected via a conservation easement since 2003 with the support of the Tyler family and members of the Kennebec Land Trust (KLT). In 2021, the Tylers donated the fee title to KLT, and an additional and adjacent 5-acre parcel was purchased by KLT the same year.

The property is managed by the Kennebec Land Trust.

**Public Uses and Access:** Hiking, snow shoeing, skiing, snowmobiling (on snowmobile trail only), and hunting. The snowmobile trail connects Maranacook Community School to Torsey Pond. Hiking trail access is via the entrance on the Thundercastle Road.

**Motorized vehicles, camping, and fires are not allowed.** Please help us protect this conservation land. We hope you enjoy your visit!



Ryan Fish

**Entrance to the trails**

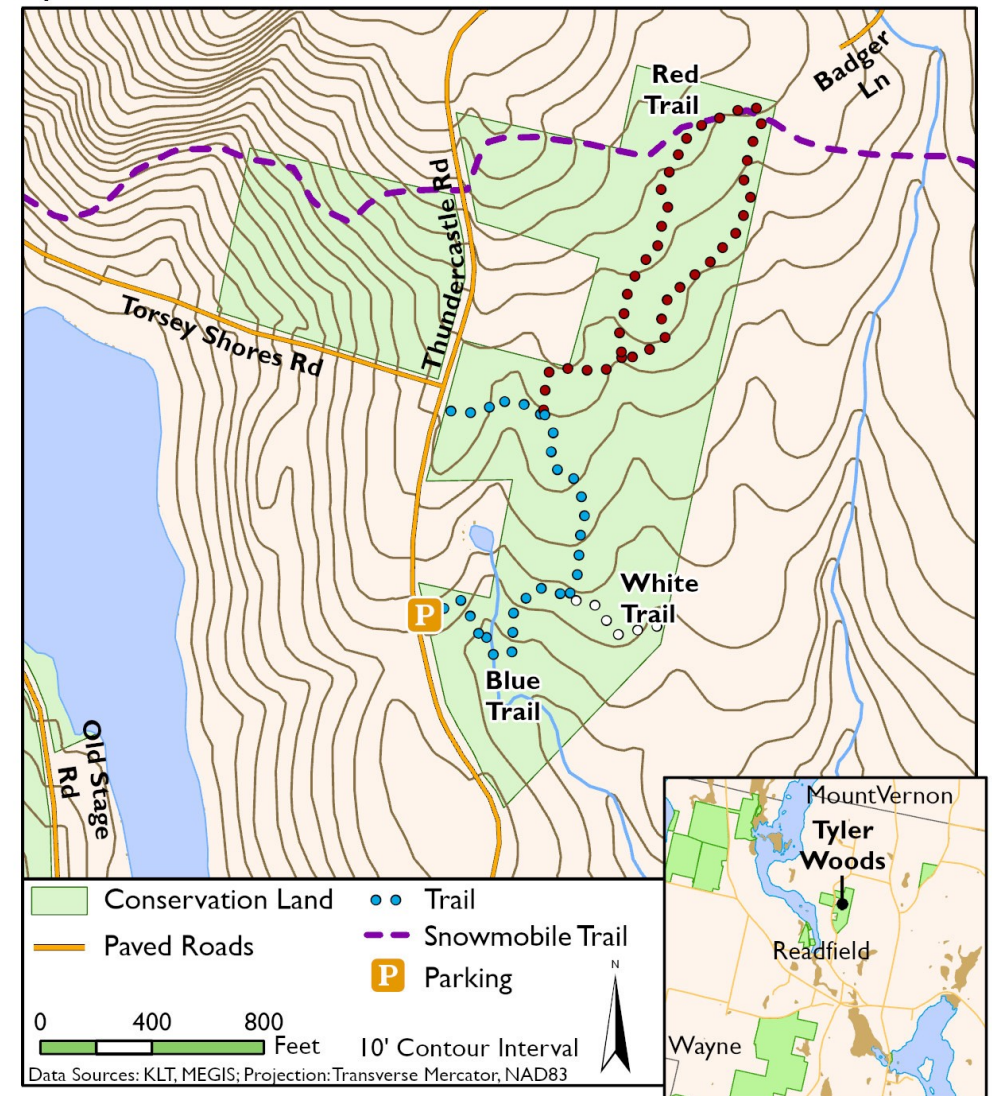
## Lay of the Land

The property consists of lands separated by Thundercastle Road. The eastern parcels are relatively flat with southerly drainage swales (draining into Maranacook Lake) dominated by blue joint grass, a network of hiking trails, and a vernal pool. Look for the historic granite marker on the property border with the inscription "GB-201" at the end of the 'White Trail.'

The western parcel slopes steadily to the west toward Torsey Pond, and is crossed by a snowmobile trail. Both parcels were logged around the same time and are dominated by a young, mixed-hardwood forest with scattered softwoods, and an occasional hemlock



## Tyler Woods Conservation Area, Readfield



**Directions:** From the center of Readfield (intersection of Routes 17 and 41), go west on Route 17. Turn right on the Old Kents Hill Road. Take the next right onto Thundercastle Road and look for the KLT sign and trailhead on the right after about 0.6 miles.